

B (58)

Conference Facilities
at the
Headquarters of the
Economic Commission for Africa

**QUANTITY SURVEYOR /
PROJECT MANAGEMENT
CONSULTANTS**



Engineering
Development

610721101
RECEIVED

NOV 13 1985

CO-ORDINATOR FOR
OVERSEAS CONSTRUCTION
OGS

TABLE OF CONTENTS

	<u>Page</u>
INTRODUCTION	1
1. COMPANY PROFILE	2 to 4
- The Wimpey Group	2 to 3
- George Wimpey International Limited	4
2. PROJECT EXPERIENCE	5 to 7
3. PERSONNEL	8
4. CURRENT PROJECTS	9 to 11
5. GENERAL COMPANY INFORMATION	12 to 14
 ANNUAL REPORT AND ACCOUNTS 1984	

INTRODUCTION

The services required to expedite this project would be provided from within the Wimpey group of companies, specifically George Wimpey International Limited of Hammersmith Grove, London W6 7EN, United Kingdom.

Wimpey has been involved in construction in Africa for over 30 years and has operated in many locations in East Africa for some 20 years.

The company continues to pursue opportunities within the area and has a particular interest in Ethiopia. This is demonstrated by the fact that the company is presently tendering for projects there.

This document sets out to further express our interest in this project and to highlight the:

- specific project experience of the company;
- key personnel of the type likely to be involved in the project;
- current projects of the company;
- financial statement of the group.

THE WIMPEY ORGANISATION

The Wimpey Group employs in excess of 29,000 personnel worldwide; about 10,800 staff and 19,000 operatives. It is engaged on more than 1,000 contracts in over 30 countries throughout the world and, in 1984, Group turnover exceeded £1,500 million. Approximately £90 million worth of plant and equipment is currently in use.

George Wimpey PLC is the holding company for a number of substantial subsidiary operating companies, most of which are organised into three main divisions: UK Construction, International & Engineering and Group Services.

The UK Construction division carries out building and civil engineering work from a network of 19 regional offices throughout the United Kingdom.

The International & Engineering division undertakes a great variety of construction work worldwide, including marine and offshore engineering, process, mechanical, electrical and chemical engineering and major infrastructure and building works.

In support of the operating companies, the Group Services division provides technical, financial and administrative services of every kind. The Group's research and development activity, undertaken by Wimpey Laboratories, is included in this division as also are the Group holdings of plant and transport resources.

Three principal subsidiary companies are managed independently from the major divisions: these are George Wimpey Canada, Wimpey Property Holdings and George Wimpey Inc. which operates in the USA; all of which are significant businesses in their own right.

Approximately 5,000 managerial, professional and technical staff enable the Group to offer the most comprehensive range of services available in the construction industry covering design, engineering, development and construction from preliminary study through to start up and initial operation.

The Wimpey Group. Worldwide engineering, construction and development.

<p>Wimpey Engineering Onshore and energy engineering and contracting</p>	<p>Wimpey Offshore Offshore energy engineering, procurement and production related services.</p>	<p>Wimpey Offshore Fabricators associated with fabrication of offshore and onshore steel structures</p>	<p>Wimpey Marine Ship and offshore operation and management services</p>	<p>Wimpey Construction Building construction, civil engineering and related activities and coal mining</p>	<p>Wimpey Homes Building housing</p>	<p>Wimpey Asphalt Quarrying and surfacing materials</p>	<p>Wimpey Waste Management Waste disposal services to local government.</p>	<p>Robert Hobbs Quarrying and ancillary activities.</p>	<p>Wimpey Group Services Financial, legal and technical services to group operating companies.</p>	<p>Wimpey Merchants Building materials distributors.</p>	<p>Wimpey Laboratories Scientific investigations and construction activities.</p>	<p>Wimpey Offshore Surveys and navigation services.</p>	<p>Steeleborne Insurance Brokers Insurance broking and risk management</p>	<p>Wimpey Property Holdings Property development, leasing and dealing and related property services.</p>	<p>George Wimpey Canada Civil development, engineering and construction in Canada.</p>	<p>George Wimpey Inc Land development, leasehold and construction in the USA.</p>	
<p>International & Engineering Division. Engineering and construction throughout the world.</p>																	
<p>UK Construction Division. Building and civil engineering in the UK, Continental Europe and Australia.</p>																	
<p>Group Services Division. Construction related activities and service back-up to the group operating companies.</p>																	

George Wimpey International Limited

In the early part of 1979 the corporate structure of George Wimpey & Co Limited was rationalised to provide an even better service to clients.

Prior to this restructuring, the overseas and other specialised activities of the company were increasing in quantity, diversity and value every year and it became essential that such important elements of the company's business should receive the attention of trading divisions entirely devoted to such activities.

In accordance with this demand, a new holding company George Wimpey PLC was incorporated to coordinate and control the Group's activities and operate through several wholly owned trading subsidiaries. The restructuring was designed to provide the benefits of experienced specialisation whilst still retaining the backing and support of the Group as a whole to each specialised activity.

George Wimpey International Limited is one of the wholly owned subsidiaries which was formed to undertake construction contracts outside the United Kingdom. Contained within the subsidiary is the entire strength and experience of the Group's overseas building and civil engineering operations which extends over many years and covers more than thirty countries of the world.

In 1984, £682 million of the total Group turnover of £1518 million was carried out overseas, of which £336 million was undertaken by George Wimpey International Limited. Under the new restructuring, George Wimpey International Limited has the responsibility for continuing, extending and developing this important international construction service previously provided by George Wimpey & Co Limited.

Where a project requires it George Wimpey International Limited works closely with other trading subsidiaries of the Wimpey Group as an integrated whole to provide an expeditious service.

2. PROJECT EXPERIENCE

The following list is a selection of recently completed projects undertaken by Wimpey of a similar nature to the proposed construction in Addis Ababa, Ethiopia. These include conference and support facilities and are high quality construction projects.

1 Queens Road Central Redevelopment, Hong Kong

A 1.1 million m² high rise project in innovative steel frame construction for offices and banking facilities. The 52 level building comprises eight massive steel masts each supported on four RC caisson foundations to carry typical mast loadings of 12,500 tonnes. Finishings were to the highest quality and building services were extremely complex.

Wimpey undertook this project in joint venture with local firm John Lok and Partners on a management contract arrangement, supervising upwards of 100 subcontractors and suppliers throughout the contract.

Client	:	Hongkong and Shanghai Bank
Architect	:	Foster Associates
Structural Engineer	:	Ove Arup and Partners
Services Engineer	:	J Roger Preston and Partners
Construction Dates	:	November 1980 - October 1985
Approximate Value	:	£500,000,000

Amman Cultural Centre, Jordan

Wimpey were awarded this contract to carry out the finishings and services to the empty shell of this building in two phases. The first was to transform the foyers and cinema to a conference hall with adjoining assembly areas to be ready for the 1980 Arab Summit Conference. The second phase included a theatre, restaurant, rehearsal areas and administrative offices.

Wimpey was the main contractor constructing and supervising the works.

Client	:	Jordanian Ministry of Youth and Culture
Architect	:	Sir William Halcrow & Partners
Construction Dates	:	March 1980 - March 1982
Approximate Value	:	£5,500,000

Holiday Inn Hotel, Jeddah

A nine storey hotel constructed in reinforced concrete on existing piled foundations. A high quality project including a banqueting hall, conference rooms and coffee shop.

The project was undertaken in joint venture with Laing and local contractor Alireza on an equal basis, as main contractors for the works.

Client	:	Arabian Hotels & Catering Co. Ltd
Architect	:	Morrison Design Partners
Construction Dates	:	May 1977 - July 1981
Approximate Value	:	£26,500,000

Maiden Al Fateh National Parade Ground, Oman

Constructed in reinforced concrete with structural steel canopies, the stadium was built to hold a capacity of 35,000 seated spectators. The work also included two royal boxes and a mosque.

Floodlighting was to night - coloured television standard and supplied by independent power generation. Mechanical and electrical services included telephones, public address systems, closed circuit television, sewage treatment, etc.

The project was undertaken by our locally registered company, Wimpey Alawi LLC on a negotiated contract basis as main contractor for the works.

Client	:	Royal Oman Police
Architect	:	Roy Lancaster Associates
Construction Dates	:	May 1981 - August 1982
Approximate Value	:	£5,750,000

SAMA Bank Building, Riyadh, Saudi Arabia

A four storey glass encased building was constructed to serve as the regional headquarters of the Saudi Arabian Monetary Authority. It has high quality finishes, granite cladding and an aluminium sun screen with a curtain wall decorated with a ninth century Arabic pattern.

The project was undertaken in joint venture with Laing and local contractor Alireza as main contractors for the works.

Client	:	Saudi Arabian Monetary Agency
Architect	:	Brown Daltas and Associates
Construction Dates	:	August 1978 - February 1981
Approximate Value	:	£17,000,000

Bank Building, Bahrain

A nine storey reinforced concrete building of 10,150 m² floor area. It stands on a two storey podium which accomodates an octagonal banking hall with underground car park and a mezzanine floor with staff recreational and training areas.

The project was undertaken by Wimpey as main contractor for the works.

Client	:	Standard Chartered Bank
Architect	:	Raglan Squire and Partners
Construction Dates	:	July 1979 - July 1981
Approximate Value	:	£6,800,000

Citadel Theatre, Edmonton, Canada

Canada's largest regional theatre, the Citadel has been completed in two phases. The first phase involved a complex housing two theatres and a hall with a total seating capacity of 1,180. The development also included a restaurant, dressing rooms for up to 45 actors, a rehearsal hall, property and costume workshop and administrative offices.

The second phase involved the construction of another theatre seating 700 to a very high standard of quality, including a 'thrust stage', indoor gardens and a 40 foot waterfall.

The project was undertaken by Wimpey's Canadian subsidiary company AV Carlson as the main contractor for the works.

Client	:	The Citadel Theatre
Architect	:	B Myers and R L Wilkins Associates
Structural Engineer	:	MB Engineering Ltd
Construction Dates	:	1976 - 1977 (Phase 1) 1984 - 1985 (Phase 2)
Approximate Value	:	£7,000,000 (Total)

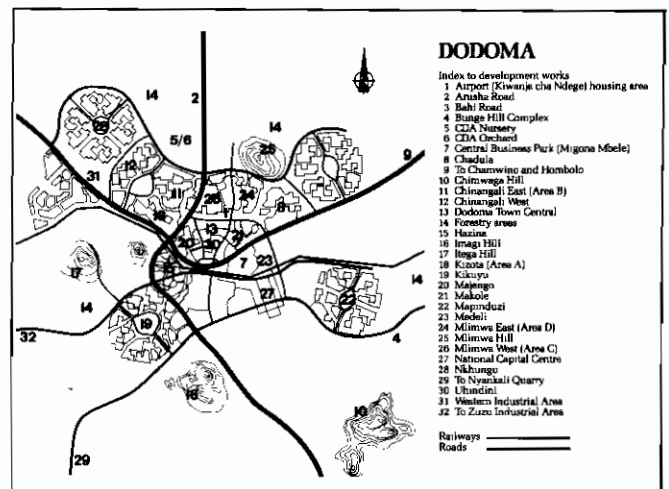
Tendering to United Nations: 'design only' project Dodoma, Tanzania



Dodoma, Tanzania's new capital city, is being developed by the Capital Development Authority (CDA) under the auspices of the United Nations Centre for Human Settlements. Because local firms were not used to dealing with massive development schemes in the time planned, the CDA decided to bring in outside design expertise for their first major estate of 1000 homes.

Wimpey was chosen for its relevant design expertise, which encompass schemes towards a million homes including a practical use of local resources. As a result, before attempting to design basic housing types – the key to successful production – Wimpey established a team in Dodoma to carry out a feasibility study.

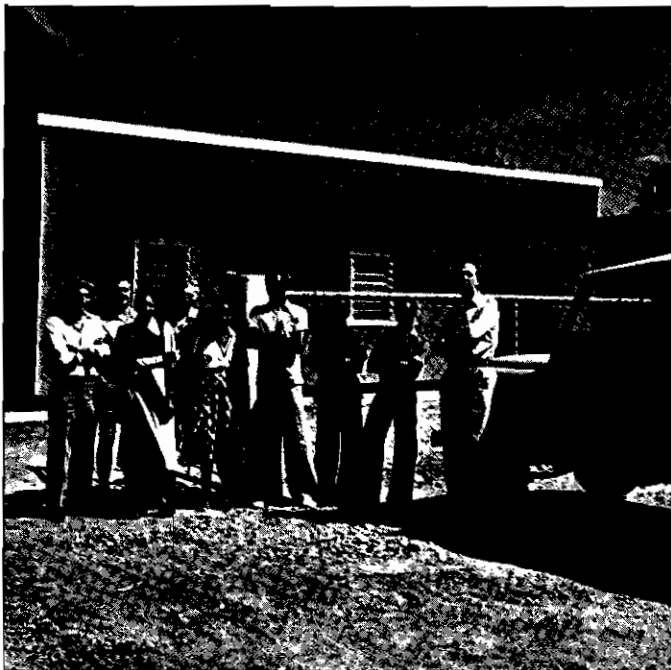
Local resources, methods of supply and local living patterns were surveyed. Armed with this information, the architects were then able to produce an outline scheme of housing



layout suited to Tanzanian culture within the constraints of the Master Plan, and the construction system which matched local resources.

Shown above is the site for the new city,

Transfer of expertise: managing design and build packages Dodoma, Tanzania



A member of the Wimpey training team with Tanzanian nationals.



Map of Tanzania showing the new capital city Dodoma, 250 miles north west of Dar Es Salaam.

Wimpey's expertise in managing design and build projects is assisting the developers of Tanzania's new capital city of Dodoma. The developers, the Capital Development Authority (CDA), were seeking international experience to manage the development. For, as is common with major construction projects in rural areas, the local firms skilled in smaller schemes required assistance in an escalating contracts programme. This resulted in the prospect of the construction programme being held up while prices escalated rapidly. The CDA suggested a transfer of expertise agreement to ensure that local resources could be expanded economically without loss of quality. This is being achieved by organising and training a division within the CDA to devise efficient design and build packages for the housing programme. The contract, which is being funded by the United Nations Centre for Human Settlements, was to establish a management division within the Dodoma

will investigate the local resources and establish construction packages using local labour and materials to assist the housing programme.

A Wimpey team of architects, planners, building managers and estimators will be working in Dodoma for two years to produce design and build packages. At the same time they will train local technicians in design and management contracting.

The result should be the orderly and economic progress of a programme to build dwellings for more than 350 000 people by the year 2000.

Client: UNCHS

Transfer of expertise: design and build systems

Keszthely, Hungary



While offering a full range of construction techniques, Wimpey has the capability and contractual flexibility to transfer its construction technology to other developers. A good example of this occurred at Keszthely in Hungary.

The Hungarian government wanted its small co-operatives to build low cost, quality housing on a large scale to supplement the heavy construction methods used by the large state companies. To achieve this, Wimpey demonstrated the advantages of its own No-Fines technique by constructing a four storey block in just over five months.

Impressed by the success of this demonstration, a contract was awarded to Wimpey through the Inter Co-operation Company Limited of Budapest for the transfer of technology contract. Over 24,000 dwellings were to be constructed under licence during a ten year period. Wimpey fully trained Hungarian architects, engineers and construction technicians in Wimpey offices and on construction sites in the United



Shown above is one such scheme, and the ceremony celebrating the completion of the 1000th house.

3. PERSONNEL

The total staff employed by the Wimpey Organisation at home and abroad exceeds 10,000 while a further 19,000 operatives are engaged on construction and engineering projects.

Directors, Divisional and Departmental Manager	284
Contract Manager	146
Project Managers	184
Agents and Sub-Agents	497
Office Manager	137
Plant and Transport	64
Other Manager	406

Professional

Civil and Structural Engineers	374
Architects	108
Quantity Surveyors	357
Surveyors	94
Estimators	82
Mechanical and Electrical Engineers	102
Building Services Engineers	53
Other Professional	420

Technical

Site Engineering Technicians	411
Surveying Technicians	281
Estimating Technicians	118
Planning Technicians	94
Mechanical and Electrical Technicians	158
Buyers	144
Design and Draughting	309
Other Technical	393

Administrative

Administrative and Clerical	2475
Computing Staff	470
Marketing and Sales	1068

General Foremen and Foremen 1557

Academic Qualifications

(i) University:	PhD, MSc, BSc, etc.	630
(ii) Professional:	Institution of Civil Engineers	265
	Institution of Structural Engineers	30
	Institution of Mechanical Engineers	40
	Institution of Electrical Engineers	15
	Chartered Institute of Building	135
	Chartered Institute of Building Services	10
	Royal Institute of British Architects	40
	Royal Institution of Chartered Surveyors	85
	Institution of Chartered Accountants	90

The following curricula vitae will illustrate the calibre of the quantity surveying and project management staff that could be assigned to this project.

W I M P E Y I N T E R N A T I O N A L L I M I T E D

C U R R I C U L U M V I T A E

NAME: ARCHER, Frank Holly
DESIGNATION: Executive Project Director
DATE OF BIRTH: 10 June 1925
JOINED WIMPEY: 1 November 1958
NATIONALITY: British
MARITAL STATUS: Married NO OF CHILDREN: 2 (Adults)
HOME AREA: London
EDUCATION: University of Wales
DRIVING LICENCE: UK

KEY QUALIFICATIONS

- a) Motorway Contracts: Agent to Divisional Contracts Manager on three sections of M1 Motorway, M2 Medway in Kent, High Wycombe and Ringwood By-passes, two sections of M5 Motorway, Gobabis Desert Roads in SW Africa and Jos/Bauchi Road in NE Nigeria.
- b) Major Dam Construction: Divisional Contracts Manager to Wimpey International Director on the Llynn Brianne Dam, S Wales and the Oyan River Dam, Western Nigeria.
- c) Large Industrial & Building Work: Agent to Managing Director George Wimpey & Co (Nigeria) Ltd/Wimpey International Director on large Fibres Complex for ICI at Kilroot, a Vehicle Assembly Plant and two very substantial Training Colleges in Nigeria, with a variety of other Industrial and Building contracts. Latterly Executive Project Director on the prestigious 45 storey high rise re-development for the Hong Kong & Shanghai Bank.

Experience

1949 - 1958 Taylor-Woodrow Construction Limited
 Engineer to Agent on heavy Civil Engineering projects in the UK.

1958 - 1963 George Wimpey, Dept 1, UK Heavy Civils
 Agent rising to Senior Project Manager on Wentbridge ICI Fibres Complex in Kilroot, M2 Medway Motorway in Kent and the M1 Extension Contracts.

1963 - 1975

Promoted to Divisional Contracts Manager on heavy Civils and selected overseas projects including further M1 Motorway contracts, Ringwood and High Wycombe By-passes, two sections of the M5 Motorway in Gloucestershire, the Llyn Brianne Dam in South Wales and the Gobabis Desert Roads in SW Africa.

Over 32 years experience of management in the construction industry covering civil and structural engineering, building works and many associated activities allied to these forms of construction.

Major project, departmental and company management appointments have been held during this period, the last 22 years have been spent with the Wimpey Group, the previous 10 years with Taylor Woodrow.

Since 1959 have progressed within the Group from Project Manager on major contracts, through Contracts Manager, Divisional Manager, General Manager, Director and Managing Director/Deputy Chairman of major subsidiary Company.

Experience gained in many parts of the world including Australia, India, Nigeria, Ghana, Zaire, Namibia, Middle East, Caribbean and the UK on all types of construction contracts. Management control including direct involvement in all aspects from pre-tender appreciation, planning, methods, tendering, field construction, financial and cost control and final account.

Some of the major contracts completed have called for overall management on behalf of client coordinating all disciplines ie. architects, engineering consultants, quantity surveyors etc. These contracts include synthetic fibres complex for ICI, six major airport complexes for Government of Zaire, major Army and Air Force cantonments and Advanced Colleges for both teaching and technician training for the Federal Government of Nigeria.

Work-forces of up to 10,000 have been managed and controlled in autonomous situations within overall group strategy, supported by a company staff of many disciplines to secure and execute work at an annual turnover rate in excess of £65M and covering the spectrum of construction activities.

Considerable experience in negotiations at all levels including Government, Clients, Consultants and financial institutions as well as selection, negotiation and control of major companies throughout the world in their association with us as sub contractors.

The type of activity undertaken and its geographical location has led to a detailed knowledge of the importance of material supply including competition, procurement, inspection, storage and shipping.

Management control including direct involvement in all aspects of pre-tender appreciation, planning, methods, tendering, field construction, financial, cost control and final account.

1975 - 1977

Wimpey International

Director and General Manager, George Wimpey International, Director Millbank Technical Services (R) and Director George Wimpey (Carribean) Ltd.

Responsible for the successful completion of major constructions with some calling for overall management on behalf of the Client and the co-ordination of multi discipline contracts.

These contracts included:

- Oyan River Dam, Western Nigeria, value £40M.
- Lokoja Military Barracks, Lagos, value £25M.
- Various Building Contracts in Trinidad, W Indies.
- Zaire Airfields Project, value £40M.
- Pankshin Teacher Training College, NE Nigeria, value £20M.
- Steyr Vehicle Assembly Plant, Bauchi, Nigeria, value £20M.
- Jos/Bauchi Road, 117kms Long, value £26M.
- Ajaokuta Training College, Nigeria, value £40M.

1977 - date

Director of George Wimpey International Limited, Managing Director/Deputy Chairman of George Wimpey & Co (Nigeria) Ltd and Managing Director of Wimpey Brown & Root Nigeria Ltd.

Work-forces of up to 10,000 have been managed and controlled in autonomous situations within overall group strategy, at a turnover rate in excess of £65M per annum. Gained worldwide experience in negotiations at all levels, including Government Clients, Consultants and Financial Institutions, as well as selection and control of major companies in their association as sub contractors.

Current responsibilities incorporate the position of Executive Project Director controlling the prestigious 45-storey high Hong Kong & Shanghai Bank Redevelopment, a Management Project, value £600M over a four year construction period. Construction in structural steel with rock tunnelling, extensive building and electrical services.

DATE: September 1985

W I M P E Y I N T E R N A T I O N A L L I M I T E D

CURRICULUM VITAE

NAME: BLANCHARD, David James
DESIGNATION: Project Director
DATE OF BIRTH: 23 September 1935
JOINED WIMPEY: 15 November 1978 RS
NATIONALITY: British
MARITAL STATUS: Married NO OF CHILDREN: 2
(M 07.09.75)
(M 02.12.77)
HOME AREA: New Malden, Surrey
EDUCATION: 1948-55 Whitgift School, Croydon
1955-60 Brixton School of Building
ONC & HNC Bldg
PROF QUALS: Higher National Certificate in Building
DRIVING LICENCE: UK

Non Wimpey Experience:

1955 - 1959 Richard Costain Limited
Management trainee. Entailed working in all
main departments including architects, QS,
estimating, accounts, planning and on-site
experience. Last year of training, assistant
to Site Manager 20 storey office block in
London.

1959 - 1965 Worked as Site Manager on four major
contracts throughout UK.

- Offices and Conference Centre in London,
W1.
- Shopping Centre, Leicester.
- Office and Shopping Complex at Feltham,
Middlesex.
- School in Wimbledon, SW19.

1965 - 1967 Posted to Libya as Building and Civil
Engineering Manager on multi-million pound
oil gathering centre for BP. Situated 400
kms in the Libyan desert, work entailed
construction of a complete new town, air
strip, power station, as well as tank farm
and numerous mechanical installations,
including pump houses.

- 1967 - 1968 Site Manager for a high rise office block and shopping complex and in Altrincham, Cheshire.
- 1968 - 1969 George Wimpey & Co. Ltd.
Assistant to Divisional Manager, Middle East. Extensive travel around the Middle East to Cyprus, Malta, Kuwait, Libya, Bahrain, Trucial States, Lebanon and Jordan, seeking future work, negotiating for contracts and generally representing the Company as required.
- 1969 - 1973 Worked in the West Indies on three major projects as Project Manager.
- 500 bed hotel and leisure complex in St Lucia, Windward Islands. Project opening in 21 months, 3 months ahead of schedule.
 - Desulphurisation Plant for Texaco in Trinidad. Sub-contractor for all civil works to Badger Inc. of the US. Maintained rigid planning control to ensure all work kept ahead of main contractor's mechanical works.
 - Set up and initiated contract for 200 room hotel in Antigua.
- 1973 - 1975 Higgs and Hill Limited
Regional Manager and Director of Higgs and Hill, St Kitts Limited. Based in St Kitts, West Indies, Manager for entire East Caribbean covering area from Puerto Rico in the north to Trinidad in South. Work carried out included:-
- New International Airport in St Kitts.
 - Jetty and Marine Facilities St Kitts.
 - Re-align and surface ring road in Nevis.
 - Build 150 room hotel in St Kitts.
 - Build new Regional Bank for East Caribbean Currency Authority.
 - New Jetty in Montserrat.
 - Construct International Championship Golf Course.
 - Miscellaneous houses and road works.
- 1975 - 1977 Construction Director for Higgs and Hill Saudia Ltd. Based in Riyadh, Saudi Arabia. Helped set up and establish company in Saudi Arabia. Work included new bank headquarters for Citibank and new palace for son of King Fahd.

1977 - 1978 Tarmac International Limited
General Manager for local joint venture Ghurair-Tarmac based in Dubai, United Arab Emirates. Responsible for all work in Emirates of Dubai, Ras-al-Khaimah and Fujeirah.

Activities included:

- Construction of \$100 million shopping, office apartment complex.
- Ready mix concrete and precast concrete factory.
- 1500 ton per day stone quarry.
- Miscellaneous building and road contracts.
- Cement and aggregate haulage.

Wimpey Experience

1978 - 1979 Wimpey International
Development Manager East Africa. Spent some time in Kenya, Zambia and Tanzania assessing market conditions, discussing with government bodies and consultants work potential etc., with view to setting up company regional offices in East Africa.

1979 - 1983
Based in Dubai, United Arab Emirates, as Construction Director for British Smelter Constructions Limited (a Wimpey wholly owned subsidiary) on the construction of a 140,000 tonne per annum primary aluminium smelter with 515 MW gas turbine power station and 30 million gallon per day desalination plant, total value of contract £850 million. BSCCL was the Main Contractor responsible for entire project split between eight major sub-contractors. At peak there was a 6000 man work force. Contract period 5 years and both aluminium and water came on stream on schedule. Total control of the project running the day to day activities of construction and also dealing with the Government, Client, Consultants, Banks and all the sub-contractors. Contract was initially negotiated in London but total control shifted to site in April 1979.

1983 - 1985

Project Director with an overall responsibility for the construction of the £150M Royal Hospital in Muscat, Sultanate of Oman with 565 beds, associated residential complex for 750 persons, recreation centre and mosque. Also overall charge of £10M new Orthopaedic Block and Clinic for the main hospital in the Capital Area. Total control of this successful turnkey project with extensive specialist medical services and high quality finishings.

DATE: September 1985

WIMPEY INTERNATIONAL LIMITED

CURRICULUM VITAE

NAME: MURCHIE, James Finlay
DESIGNATION: Project Director
DATE OF BIRTH: 23 September 1942
JOINED WIMPEY: 7 September 1959
NATIONALITY: British
MARITAL STATUS: Married NO OF CHILDREN: 3
EDUCATION: 1953-58 Beckenham & Penge Grammar School
6 'O' levels
Brixton School of Building, London
ONC Bldg; ONC Civil Eng; HNC Civil Eng
QUALIFICATIONS: Higher National Certificate in
Civil Engineering
COURSES: 1962 - C&CA Concrete for Site Engineers (1 wk)
1969 - Urwick Orr Production Management in
Civil Engineering (3 wks)
1970 - JCT Conditions of Contract in
Construction Management (4 days)
1971 - Senior Management in Civil Engineering
(2 wks)
1984 - Ashridge Senior Management, Berkhamstead
Part I (1 wk)
1985 - Ashridge Senior Management, Berkhamstead
Part II (1 wk)
LANGUAGES: Spanish (partly spoken)
DRIVING LICENCE: UK

Experience with Wimpey

Dept 18, London Region
Sept 1959 - Oct 1959 Trainee Engineer, Chapel Street, London.
17 storey RC Office Block, value £600,000.
Nov 1959 - March 1960 Trainee Engineer, RAC House, Croydon on
foundations and basement for a 12 storey RC frame
office block, value £500,000
1960 Site Engineering & Survey Course, Dawley Road
Training Centre, Hayes, Middlesex. Trained in
the adjustment and use of modern Survey
equipment and techniques.

Sept 1960	-	May 1961	Site Engineer, Southampton Row. Foundations and superstructure for a 6 storey RC frame block of flats, value £120,000.
May 1961	-	Oct 1961	Site Engineer, Trench Wood Estate, Tonbridge in Kent on site regrade, drainage and reinforced concrete foundations for a 175 unit housing estate, value £300,000.
Oct 1961	-	April 1962	Site Engineer, Saint Giles Circus, London. Bored piling, RC foundations and a post-tensioned Bridge.
April 1962	-	May 1962	Site Engineer in London. Setting out and supervision of large diameter bored piling, foundations and retaining walls for a 33 storey RC frame office block and accommodation block. Also, construction of a post-tensioned concrete bridge. Total contract value £3.4M.
May 1962	-	July 1963	Site Engineer, Grosvenor Square, London. 9 storey and 4 storey RC frame flats with high quality finishings, faced with Portland Stone and brickwork. Foundations and superstructure, value £220,000.
July 1963	-	April 1965	Senior Engineer, Southern House, Croydon. 18 storey, RC frame Office Block. Foundations superstructure, finishings and external works value, £1.6M.
April 1965	-	Sept 1966	Sub Agent, Whitehorse Road, Croydon. 12 storey, RC frame Office Block on foundations superstructure and finishings, value £500,000.
Sept 1966	-	May 1968	Site Agent, Sydenham Road, Croydon. Substructures to two 26 storey RC frame office blocks including large diameter bored piles to a depth of 80'-0", pilecaps, heavy RC foundations, retaining walls and suspended slabs, value £4.5M.
May 1968	-	Sept 1972	Site Agent, Euston Centre, London. 36 storey, RC frame Office Block and 7 storey block of flats.
Sept 1970	-	Sept 1972	Site Agent, Wilson Street, London. 6 storey, RC frame Office Block on piled foundations.
Sept 1972	-	Jan 1974	Site Agent, on construction of a steel framed factory including M&E foundations, all services, overhead cranes and a small 2 storey office block. Total value £750,000.
Jan 1974	-	March 1975	Senior Agent, Calcutta House, London. Conversion of Warehouse into the City of London Polytechnic.

Jan 1974	-	July 1975	Senior Agent, St Dunstons Land, London, 9 storey RC frame Office Block with deep basements founded on large diameter bored piles. Extensive temporary works required as listed buildings formed two boundaries to the site and a Roman bath house occupied a quarter of the site. Value £2.5M. Duties included general site organisation, liaison with Architect, Consultants, local authorities, financial and cost-control, planning, sub-contractor works and industrial relations.
July 1975	-	Nov 1977	<u>Wimpey International</u> Project Manager, for Wimpey-Laing Bander Abbas, Iran. Workshops, Offices, Roads and services for Naval Dock Yard including workshops, turbine testing buildings, administration buildings, desalination plant, electrical sub-station, all mains services, covered walkways & landscaping, value £32M.
Nov 1977	-	Jan 1979	Project Manager for Wimpey-Laing on an Armaments Complex at Esfahan, Iran for the Iranian Army. Steel framed workshops, school, housing, sewage treatment plant, water treatment plant, associated roads and services. Total contract value was £67M but not completed due to civil unrest.
Feb 1979	-	June 1980	<u>British Smelter Constructions Limited</u> <u>(part owned Associate Company)</u> Construction Manager on the Dubai Aluminium Smelter in the United Arab Emirates. Construction of a complete plant including pot-rooms, power station, desalination plant, green mill, cast house, port facilities, roads and infrastructure works. Total contract value £665M with an average turnover of £180M per annum.
Aug 1980	-	Jan 1982	<u>Wimpey International</u> Construction Manager, Wimpey (Caribbean), responsible for the profitable completion of building and industrial construction in the region. Direct involvement in pre-tender assessment, planning methods, design, tendering, field control, financial and cost control, and final accounts with an annual turnover of £35M pa. Considerable experience gained in negotiations at all levels, including Government, Clients and Consulting Engineers, as well as selection, negotiation and control of major sub contractors.
Jan 1982	-	Feb 1984	Co-ordinating Package Manager for John Lok/ Wimpey joint venture management contractors on the 45 storey prestige office redevelopment of 1 Queens Road Central for the Hong Kong & Shanghai Bank, value £600M.

Development of subcontract packages from concept through tendering, evaluation and letting, followed by design development and off-site fabrication.

This was a "fast track" programme with a total subcontract value of £135M.

March
1984 - date

Took charge as Project Director on the £120M Financial Complex in Port of Spain, Trinidad part way through the project, with work consisting of twin 23 storey RC frame Tower Blocks with 23m linking RC Podium Block.

Responsible for the total control of this multi-discipline contract, Client & Architect liaison, sub contract negotiations and overall profitability.

DATE: September 1985

CURRICULUM VITAE

NAME James Colville FALCONER

DATE OF BIRTH 13th February 1948

NATIONALITY British (Born Kirkcaldy, Fife, Scotland)

PROFESSIONAL QUALIFICATIONS B.S. Quantity Surveying (2nd Class Honours)
A.R.I.C.S. (1970)

GENERAL Married
1 Child. Born 21st February 1983

EXPERIENCE

1985-	Wimpey International London. Contracts Manager, Luanda Hotels, Angola. Value £10 M.
1982-85	Joined George Wimpey International. Senior Quantity Surveyor, Management Contractor, Hong Kong, New Headquarters for Hong Kong and Shanghai Banking Corporation, value £ 500 Million. Responsible for pre- and post-contract administration of the Ground Floor/Basement Zonal Works, value approx. £ 40 Million and Fire Protection Works, value approx. £ 12 Million.
1980-82	Balfour Beatty. Unit Quantity Surveyor, The Gambia. Territorial responsibility for all pre- and post-contract duties for private and government projects with annual unit turnover of approx. £ 5 Million.
1979-80	Balfour Beatty. Senior Quantity Surveyor, Nigeria. Roads and Services for Residential/Light industrial development. Project value £ 15 Million. Site based but regional responsibilities.
1978-79	Joined Balfour Beatty, International Construction Division. QS Group Leader engaged on pre-contract duties for multi million pound tenders in the Middle East, Africa and Far East.
1976-78	Quantity Surveyor, Halcrow International Partnership, responsible for interim valuations and final measurements on the Dubai Dry Dock Complex. Project value £ 250 Million.
1975-76	Quantity Surveyor, Robert Matthew Johnson-Marshall and Partners, responsible for pre- and post-contract duties, Sharjah, U.A.E. Project value £ 25 Million.

- 1972-75 Quantity Surveyor, Ministry of Works and Supplies, Malawi Government. Pre- and post-contract duties on Central Government projects of values up to £ 10 Million.
- 1970-72 Quantity Surveyor, Wheeler Rumble and Perrin. Pre- and post-contract duties involving private and local authority projects of values up to £ 5 Million.
- 1969-70 Trainee QS, Fife County Council. Assistance on pre- and post-contract regional government projects.
- 1965-69 Three full-time college years with 3 months site experience with George Wimpey between 1st and 2nd years and 15 months general experience with Davis Belfield and Everest, Chartered Quantity Surveyors, London, between 2nd and 3rd year.

CURRICULUM VITAE

Name: STEPHEN JOHN CHAMBERLAIN

U.K. Address: 10 Oakleigh Road
Stratford Upon Avon
CV37 0DW
Warwickshire

Date of Birth: 9 September 1947

Marital Status: Married with no children

Nationality: British

Education: Warwick Public School

Qualifications: Member of the Chartered Institute of Building

Summary of Career:

<u>Date</u>	<u>Company</u>	<u>Experience</u>
Sept 1965 - Aug '68	Turriff Construction Co Ltd. Budbroke Road Warwick UK	Assistant Q S on dual carriageway construction, university & factory building & sewage works extension in UK
Sept 1968 - June '73	Sheldon Contracting Co Ltd 692 Warwick Road Solihull West Midlands	Quantity Surveyor on road construction, drainage, sewage works & tunnelling contracts in UK upto £1 m in value.
June 1973 - Nov '76	John Laing Construction Co Ltd Page Street Mill Hill London	Project Q S BAC/RSAP Support Project, Saudi Arabia. Approx. value £14 m. Final account negotiations with Technical Support Group in UK
Dec 1976 - May '78	Bernard Sunley & Sons 221/241 Beckenham Rd Beckenham Kent	Project Q S on multi-storey bank project & police residential complex in United Arab Emirates - approx. value £9 m.
June 1978 - Sept '80	George Wimpey Intl Hammersmith Grove London	Senior Q S on Dubai Aluminium Smelter - civil engineering contract approx. £150 m.

/Sept 1980

/2

Sept 1980 - Dec'81	George Wimpey Intl Hammersmith Grove London	Promotion to Project Quantity Surveyor to completion of same contract.
Jan 1982 - Feb'84	George Wimpey Intl	Group Quantity Surveyor Financial Complex Port of Spain, Trinidad. Twin Tower 22 storey prestige Ministry of Finance Offices, Central Bank, Security Executive & Auditorium Complex. Permanent staff of 3 UK ex-pat QS's, 5 local staff JCT Form of Contract approx. value £100 m. Responsible for all Commercial aspects of the contract.
Mar 1984 - Mar'85	Sheldon Contracting Co Ltd 692 Warwick Road Solihull West Midlands	Chief Quantity Surveyor Responsible for all Quantity Surveying on Civil Engineering Contracts having a turnover of approx. £7 m. per annum.
Mar 1985 -	George Wimpey Intl	Senior Quantity Surveyor John Lok/Wimpey Joint Venture Fit Out packages Hong Kong & Shanghai Bank

W I M P E Y I N T E R N A T I O N A L L I M I T E D

CURRICULUM VITAE

NAME: HOLYOAK, Richard Lewis
DESIGNATION: Project Manager (Fit-Out)
DATE OF BIRTH: 3 April 1946
JOINED WIMPEY: 4 April 1966
NATIONALITY: British
MARRIED STATUS: Married NO OF CHILDREN: 4
(F 20.08.74)
(M 03.11.75)
(F 06.06.78)
(F 10.05.80)

HOME AREA: Witham, Essex

EDUCATION: 1953-64 Brentwood Public School
5 'O' levels; 1 'A' level
1966-69 Brixton School of Building, London
HND Building

PROF. QUALS: Associate Member of the Chartered Institute of
Building (ACIOB)

COURSES: 1967 - Site Engineering & Surveying Course, Dawley
Training Centre, Southall (9 weeks)
1970 - Quality Control Course with Wimpey
Laboratories, Southall. Trained in soils and
concrete testing and technology.

DRIVING LICENCE: UK

Experience with Wimpey

Sept April Trainee Sandwich Builder studying for Higher
1966 - 1970 National Diploma in Building Technology at the
Institute of Building, Brixton with Industrial
Training periods as follows:

Department 5, Kent Region

- Trainee Engineer for on a large Military
Barracks at Chatham, Kent, comprising various
traditional brick Blocks. Responsible to QS
for measurement of demolition and glazing
sub-Contractor works.

Department 22, Witham Region

- Trainee Engineer for on Rainsford Road
Redevelopment, Essex comprising five 5-storey
'No-fines' Maisonettes. Responsible for
setting-out, supervision of sub-Contractors
shuttering, roads and drainage works.

Department 17, Liverpool Region

- Acting Section Engineer on Cantrell Farm Estate housing project, responsible for supervising 2 gangs with General Foreman on paving, fencing, landscaping, roads and drainage, external works.

Department 18, London Region

- Site Engineer on Cavendish Street multistorey, on 14-storey RC frame building with ribbed hollow pot floor. Responsible for completion of floors where hoists come through, external paving works and some internal quality finishings.

April 1970 - Sept 1971

British Smelter Constructions Limited (part GW owned)

Planning Engineer for BSCL on the Aluminium Bahrain Smelter at Flyover House, Brentford. Responsible for critical path programming, using PERT, for two sections - Anode Kilns and Potrooms.

Sept 1971 - April 1974

Assistant Resident Civil Engineer in Bahrain working on the \$110M Aluminium Smelter Power Complex, Anode Kilns, Potrooms and Cast House - a management Contract. Responsible for general Quality Control, approval of Contractors materials, checking setting-out and related correspondence.

May 1974 - Feb 1975

Co-ordination Engineer for BSCL on the Cerro Verde Copper Mine project in Peru. Initially on overall project programmes, later spent 5 weeks in Wright Engineers (Consultants) Head Office, Vancouver. Setting-up critical path PERT network system using IBM computer for BSCL to use in their Lima Office. Also controlling the issue of drawings, specifications and documentation within the site set-up.

March 1975 - March 1977

Resident Civil Engineer for BSCL in Dubai on the Aluminium Smelter project - also a Management Contract. Responsible to the Construction Manager for setting-out of earthworks 3km x 1.5km in size, construction of east and west camps with 'no-fines' and Atlantic units, as well as associated support facilities and infrastructure works.

April 1977 - May 1982

Area Engineer (Civil) for the Reduction Plant package and Interconnecting Services (ie. gas, water and air). Also on all external roads, drainage (foul and stormwater), fencing and coastal protection gabions.

Following revised management structure became Area Co-Ordinator, responsible for all aspects (M&E and Civil) for the two packages, controlling 11No Engineers. Attended project management and sub-Contractors meetings, handled claims and correspondence arising.

June
1982 - date

Package Co-Ordinator on the £600M Hong Kong & Shanghai Bank project initially based in Flyover House, Brentford. Transferred to site in January 1983. Responsible for the high quality fit-out and finishings of this 42-storey prestigious steelframe Office Block with extensive building services.

Promoted to Project Manager (Fit-Out) in January 1985.

DATE: June 1985

WIMPEY INTERNATIONAL LIMITED

CURRICULUM VITAE

NAME: BRYANT, Michael John
DESIGNATION: Assistant Construction Manager
DATE OF BIRTH: 8 May 1951
JOINED WIMPEY: 4 February 1980
NATIONALITY: British
MARITAL STATUS: Married NO OF CHILDREN: 1
(F 28.04.83)
HOME AREA: Beckenham, Kent
EDUCATION: 1962-68 Moulsham Secondary School
6 'O' levels
1968-73 Mid Essex Technical College
ONC; HND Civil Engineering
1973-76 Brighton Polytechnic
BSc Civil Engineering
QUALIFICATIONS: 1981-Member of the Institution of Civil
Engineers (MICE)
COURSES: 1981 - Health & Safety at Work (1 week)
DRIVING LICENCE: UK

Previous Experience

Aug 1968	Sept - 1969	<u>Marconi Co., Chelmsford, Essex</u> Junior Draughtsman/Surveyor preparing building RC detail drawings.
Oct 1969	Sept - 1970	<u>R W Fisher & Associates, Chelmsford, Essex</u> Junior RC detailer on Multi Storey RC frame works.
Sept 1970	March - 1971	Commenced Higher National Diploma (Civils) at Mid Essex Technical College.
March 1971	Sept - 1971	<u>Unit Construction Co. Ltd, Waltham Abbey, Essex</u> Engineer for GLC housing project on 2000 unit scheme in Cheshunt, Herts. Responsible for setting-out drainage works.
Sept 1971	March - 1972	Returned to HND studies

		<u>W&C French Limited, Contractors</u>
March 1972	- Sept 1972	Engineer at Gatwick, setting-out PQ and drylean concrete to fine tolerances.
Sept 1972	- March 1973	Sat and passed HND Civils.
March 1973	- Sept 1973	Engineer later acting Section Engineer for W&C French on Piccadilly Tube Extension value £8M, responsible for setting-out and S/C supervision for tunnel lining works placing twin 6m LG precast "U" sections side by side for track laying.
Sept 1973	- Aug 1976	Taking BSc Course at Brighton Polytechnic, working holidays as a freelance Engineer, setting-out earthworks, formation and drainage.
		<u>Roy Ham - Paul Gray Partnership, Consulting Engineers</u>
Sept 1976	- Feb 1977	Design Engineer designing and detailing minor structural works, such as remedial underpinning, steelframe buildings and traditional housing.
		<u>Binnie & Partners, Consulting Engineers</u>
March 1977	- Jan 1980	Assistant Design Engineer designing flood wall raising along an industrial frontage as part of the Thames Tidal Defence project.
		Also updated quarterly estimates and production of Contract BOQ/Specifications.

Experience with Wimpey

		<u>UK Civils</u>
Feb 1980	- Jan 1981	Senior Engineer on the £20M Mar Dyke/E of Grays A13 Motorway in Essex, responsible for a maximum of nine Engineers setting-out and supervision of seven bridges and one subway, RE liaison, abstracting and materials ordering for permanent and temporary works, acting Sub-Agent for six weeks.
Jan 1981	- April 1981	Senior Engineer for planning the structures on various UK Motorway Tenders at Hammersmith. Abstracting from BOQ, assessment of shutter reuses, liaison with statutory bodies, temporary works including cofferdams, plant and labour outputs and overall programming.
		Later worked on the A13 claim for one month.

April
1982 - date

Wimpey International

Senior Project Engineer on the £600M IQRC Hong Kong and Shanghai Bank Redevelopment, a 45-storey steelframe prestige Office Block with diaphragm walling, rock funnel outfalls, heavy RC three level basement, glazed envelope and very high quality finishings.

Promoted to Assistant Construction Manager in May 1984 looking after the RC foundation works and associated packages.

DATE: October 1985

W I M P E Y I N T E R N A T I O N A L L I M I T E D

CURRICULUM VITAE

NAME: INSKIP, Peter John
DESIGNATION: Assistant Package Manager
DATE OF BIRTH: 13 June 1953
DATE JOINED WIMPEY: 1 June 1972
NATIONALITY: British
MARITAL STATUS: Married NO OF CHILDREN: -
HOME AREA: Warsash, Southampton
EDUCATION: 1964-67 Kings School, Bruton
 1967-72 Monkton Combe Public School, Bath
 11 'O' levels; 3 'A' levels
 1972-75 Portsmouth Polytechnic
 BSc Civil Engineering
QUALIFICATIONS: Associate Member of Institution of
 Civil Engineers (AMICE)
COURSES: 1972 - Site Engineering and Surveying
 Course. (9 weeks)
 1976 - RC Design Course (4 weeks)
LANGUAGES: French 'O' level
DRIVING LICENCE: UK

Experience with Wimpey

Sandwich Civil Engineer studying at
Portsmouth Polytechnic with industrial
training periods as shown:-

July Sept
1972 - 1972 Wimpey Site Engineering and Surveying
 Course. Trained in the use and adjustment
 of instruments, setting out techniques and
 survey plotting.

Sept Jan
1972 - 1973 Dept 23, Southampton Region
 Junior Engineer on Vosper Thorneycroft
 Contract in Southampton. Setting out and
 general engineering duties associated with
 covered shipbuilding berth comprising 150ft
 long sheet piled wharf (Larssen No.6 x 65 ft
 long) with piled anchorage system using
 post-tensioned cables and 18" dia tubular
 steel piles driven by barge mounted 38RB
 and a D22 hammer.

Feb 1973 - July 1973

Commenced degree course.

July 1973 - Jan 1974

Dept 20 Nottingham Region

Junior Engineer on Mansfield Central Development Areas in Nottingham comprising an RC shopping precinct (58 shops) with stores above, 4-5 storey car park and access roads. Responsible for control of earthworks by 54RB face shovel, setting out pad footings in rock, materials ordering and site supervision of CI drainage system excavated in laminated sandstone to close tolerances.

Feb 1974 - July 1974

Second semester of degree course.

July 1974 - Aug 1974

Dept 22, Witham Region, Essex

Junior Engineer on Central Development at Grays - Thurrock, Essex. Work comprised an RC shopping precinct (46 shops) with market area, 5-6 storey RC frame office block, service roads and a 6-7 storey car park. Carried out general setting out duties, check site rebar, weekly concrete test cubes and general quality control. Contract was nearing completion.

Transferred to Albion Sugar, Tilbury Starch Plant, Essex, value £30M. Setting out and supervision of 285mm rectangular West 'Hardrive' piles, maintained piling records.

Sept 1974 - Aug 1975

Final degree year.

Sept 1975 - Oct 1975

Wimpey Asphalt Ltd

Site Engineer at RAF Brawdy, Pembrokeshire on resurfacing work for the Property Services Agency. Responsible for setting out and control of asphalt placing, using a 5 metre Blaw-Know paving machine. Updated progress charts and materials control.

Oct 1975 - Feb 1976

Wimpey Laboratories, Hayes, Middx

Spent one week on familiarisation with site investigation techniques and then as Supervising Engineer on three week site investigation (using shell and auger rig) at Low Worsell Pumping Station near Teeside, Cleveland. Liaised with Client, took samples and reported.

Seconded to Tehran-Berkeley, Consulting Engineers in Abadan, Iran for Carun River Atomic Power Station site investigation. Liaised with Client, supervised in-situ tests using lorry-mounted drilling rig. Presented report which included collated test results and at Clients request modified his site investigation Specification for future contracts. (5 weeks)

On loan to Rendel, Palmer & Tritton at the Thames Barrier, Woolwich supervising a drilling crew obtaining information on chalk condition below the piers prior to concreting. Adapted existing equipment to produce better sampling of soft silt above the chalk. (5 weeks)

March 1976 - June 1979

Civil & Structural Design Dept, Hammersmith
Design Engineer, (following an intensive course on RC design which included a site visit to a steelworks, drawing/detailing and discussions on codes of practice), assisting in the design and structural detailing of various buildings:-

- Outbuilding for Wimpey Laboratories with Test-pit
- Tender for Office Extension in Essex
- Timber Framed Housing Development

Designed a 37 metre Alumina Silo Base for the Dubai Smelter Project using limit state theory on the computer.

June 1979 - June 1982

Dept 23, Southampton Region

Senior Engineer on IBM Phase IV at Cosham, Hampshire - a management contract, value £25M.

Responsible for up to ten engineers, supervision of sub contractors and liaison with Consulting Engineers Arup Associates on design matters. Attended site meetings on design and progress, carried out detailed site supervision and resolved any practical problems arising. Latterly became closely concerned with the glazing sub contractor whose performance was causing serious delays to the handover sequence. This meant detailed planning, close progress monitoring, materials checks and visits to suppliers to expedite the work.

June - date
1982

Wimpey International

Package Co-ordinator for the IQRC Hong Kong Bank Project, a £600M management contract for a 45-storey steelframe Office Block with extensive services and, very high quality finishings. Promoted to Assistant Package Manager with responsibilities for the glazed envelope on transfer to site during February 1983.

DATE: March 1985

W I M P E Y I N T E R N A T I O N A L L I M I T E D

CURRICULUM VITAE

NAME: HOLDAWAY, Graham
DESIGNATION: Planning Manager
DATE OF BIRTH: 18 September 1945
JOINED WIMPEY: 9 February 1981 RS
NATIONALITY: British
MARITAL STATUS: Married NO OF CHILDREN: 4
(F 13.09.67)
(M 21.10.68)
(F 19.09.70)
(M 05.01.78)

HOME AREA: Camberley, Surrey

EDUCATION: 1957-63 Kingston Technical School, Surrey
4 'O' levels
1963-66 Ewell Technical College, Surrey
on an OND Building Course

COURSES: - Planning Course (2 weeks)
- JCT Conditions of Contract

DRIVING LICENCE: UK

Other experience

Sept 1963 - May 1965 Turiff Construction Ltd, Contractors
Cost and Bonus Surveyor.

Feb 1979 - Feb 1981 CP Fittings Ltd
Responsible for co-ordinating the purchase and sale of products within the Case and Sound Recording Industries, including marketing and development of both wholesale and retail outlets throughout the UK, Europe and the Middle East.

Experience with Wimpey

May 1965 - June 1966 Department 18, London Region
Cost & Bonus Surveyor on weekly production analyses for direct labour and weekly bonus assessment on highrise and factory developments in Tottenham Court Road, Croydon and Tooting.

July 1966 - Dec 1969 Production Control Engineer on Sydenham Road, Croydon comprising two 19 storey RC frame speculative buildings. Responsible for establishment of weekly schedules, worksheets, and overall programming.

Dec 1969 - Dec 1973

Planning Engineer on the following:-

- ICL Bracknell, multistorey steel framed Office Block and Computer Hall.
- Wigmore Street, London which consisted of a multistorey RC framed Office Block and associated residential units.

Dec 1973 - Aug 1977

Promoted to Area Planning Engineer with a team of five based at Stanhope Street in London. Responsible for on-site planning functions of all contract work within Central London.

Aug 1977 - Jan 1979

London Area Planning Engineer based at headquarters in Chiswick Green House, W4. Responsible for co-ordinating six planning staff in the development and submission of tenders, providing full planning services to all operational sites in the London Area. Projects included commercial development, minor and major refurbishments, and a variety of special major projects. Projects covered during this period were as follows:

(i) Contract Work

- Wigmore Street, 12 storey RC with underpinning.
- Anthony Gibbs, Bishopgate, a 15 storey top/down building with diaphragm walling.
- Rayne Institute and Tottenham Court Road, two 10 storey developments, both piled with underpinning.
- Euston Centre Blocks C, Q and S (2-6 storey) and St Thomas' Office Development (15 storey).
- Marylebone Police Station, 7 storey RC frame with underpinning.
- St Dunstons Lane, major large diameter bored piling with preservation of underlying Roman baths.
- 67 Wilson Street, Featherstone Street (8 storey) and Hanover Square (7 storey).
- Hammersmith Grove Extension (6 storey) and Project 27 - Hammersmith (4 storey).
- Unilever House & Aldgate Office Blocks (12 storey) with substantial bored piling and heavy RC foundation.

(ii) Refurbishment Projects

- Centre Point, new Oxford Circus.
- Calcutta House, conversion of warehouse into a polytechnic.
- Fredericks Place, specialised roof for City Of London in old style.

- Bloomsbury Square & Brent Housing.
- Lion Tower, Colliers Wood.
- Novello House, Wardour Street.
- LCC Housing with 4 day modernisation of flats whilst occupied.

(iii) Special Projects

- Grosvenor Gardens, Victoria complete rebuild whilst supporting traditional facade.
- Barclays Staff Hostel, four storey no-fines in Goldhawk Road.
- Gilbey Vintners Warehouse at Basingstoke.
- Bond Street LTA Underground Station
- Friary Centre Shopping Complex in Guildford with extensive services and quality finishings.

Wimpey International

Jan
1981 - date

Planning Manager for John Lok/Wimpey on the prestigious £600M Hong Kong & Shanghai Bank Redevelopment at 1 Queens Road Central. A management project to construct a 47 storey steelframe office block, incorporating three basement levels, with rock tunnelling, diaphragm walling, glazed envelope, extensive building services and very high quality finishings.

Responsible for a team of six planners on all aspects of planning and co-ordination. Activities included pre-contract programming/planning, development of documentation, tender evaluation, design development in liaison with all disciplines, monitoring fabrication/manufacture of specialist packages, progressing erection and installation of works. Other involvement in development and control of Common User Facilities for this very sophisticated redevelopment project.

DATE: October 1985

W I M P E Y I N T E R N A T I O N A L L I M I T E D

CURRICULUM VITAE

NAME: SMYTH, Richard Carson
DESIGNATION: Services Manager
DATE OF BIRTH: 14 November 1945
JOINED WIMPEY: 30 December 1974
NATIONALITY: British
MARITAL STATUS: Married NO OF CHILDREN: 3
(M 25.12.61)
(F 29.09.69)
(F 29.07.72)
HOME AREA: Enfield, Middlesex
EDUCATION: 1957-59 Tulse Hill School
1959-62 Enfield Technical School
5 'O' levels
1962-66 East Hertfordshire College
1966-67 Tottenham Technical College
City & Guilds Mechanical Engineering
PROF QUALS: 1978 Associate Member of the Institution of
Mechanical Engineers (AMIMEchE)
COURSES: 1979 Effective Meetings
Programming
Project Management
Contractual/Commercial
DRIVING LICENCE: UK

Previous Experience

Aug 1962	-	Sept 1967	<u>British Oxygen, Edmonton, London</u> Indentured Apprentice.
Sept 1967	-	April 1973	<u>E J Woollard Ltd, Cheshunt, Herts</u> Maintenance & Planning Engineer on design and coordination, plus installation of services.
April 1973	-	Sept 1974	<u>Reeves & Sons, Enfield, Middlesex</u> Design and co-ordination plus installation of services.
Sept 1974	-	Dec 1974	<u>M K Electric Ltd, Edmonton, London</u> Maintenance Planning Engineer

Experience with Wimpey

Dec 1974 - Nov 1977 Civil Design & Planning Dept, Brentford, Middx
Senior Programme Technician working as a PERT planner on the BP Power Station Extension at Grangemouth.

Also worked at Head Office as a Planner/Coordinator on a variety of contracts as follows:

- Tilbury Starch Plant, Essex.
- ME&C Gas Compressor Station, Bathgate for British Gas.

Nov 1977 - June 1980 Planning Services Dept, Hammersmith W6
Promoted to Coordinator based at Head Office, Hammersmith on the £150M Aluminium Smelter in Dubai, UAE. Responsible for the engineering services element comprising co-ordination of design, programming, subcontractors, manufacturing and allied quality assurance procedures.

June 1980 - Dec 1980 Dept 1, UK Civils
M&E Coordinator on site at Nigg Oil Terminal (Customer User Services) at Tain, Scotland.

Jan 1981 - Nov 1981 Building Services Coordinator on the Air Defence Project at RAF Marham, Norfolk for the Property Services Agency, value £20M. Responsible for the on site supervision and control of subcontractors for all M&E service installations.

Nov 1981 - date Wimpey International
Deputy Manager (Engineering Services) on the HongKong & Shanghai Redevelopment Project at 1 Queens Road Central. This was a 45 storey prestige Office Block, with rock tunnelling, heavy RC basement, steelframe structure and glazed envelope, numerous services and very high quality finishings.

DATE: July 1985

4. CURRENT PROJECTS

The following list is a selection of some projects currently being undertaken by the company which are considered relevant to the proposed works.

Hotel Renovations, Angola

Wimpey are working in joint venture with Empressa Astaldi Estero SpA for the refurbishment and modernisation of the Tropico and Panorama hotels.

Client	:	Ministry of Internal Commerce c/o Anghotel
Engineer	:	Dar Al-Handasah, Cairo
Start	:	May 1985
Finish	:	August 1987
Value	:	£8,000,000

Alawi Enterprises, Muscat

Construction of a 3 storey office block in reinforced concrete frame with block infill. The offices will be fully air conditioned.

Client	:	Alawi Enterprises
Architect	:	Huckle and Partners
Engineer	:	Huckle and Partners
Start	:	February 1985
Finish	:	November 1985
Value	:	£1,130,000

Engineering Building, Trinidad

Construction of a four storey engineering building at St. Augustine Campus for the University of the West Indies. The building is in reinforced concrete frame with concrete block infill panels. Work also includes all finishings, M&E services, external works and landscaping.

Client	:	University of the West Indies
Architect	:	Watkins Phillips Bynoe & Partners
Start	:	June 1984
Finish	:	April 1986
Value	:	£7,630,000

Orthopaedic Ward Clinic and CSSD Unit at Khoula Hospital, Oman

Design and construction of an orthopaedic ward clinic and CSSD unit within the existing Khoula hospital complex.

Client	:	Ministry of Health
Consultant	:	MDA (Middle East) Ltd
Start	:	June 1984
Finish	:	April 1986
Value	:	£8,900,000

British Embassy Housing, Riyadh, Saudi Arabia

Construction of diplomatic staff housing comprising 35 houses on 7 sites adjacent to the British Embassy.

Client	:	Secretary of State, Foreign and Commonwealth Affairs
Architect	:	Trevor Dannel & Partners
Start	:	February 1984
Finish	:	October 1985
Value	:	£13,000,000

Hong Lok Yuen Estates, Luxury Housing, Hong Kong

Wimpey acted as private developer in joint venture with Hong Lok Yuen estates for a new township in Hong Kong. The township will consist of 951 houses, a school, commercial centre, medical centre, sports facilities and all necessary infrastructure services including roads, parking areas, and sewage disposal.

Client	:	Hong Lok Yuen Estates Ltd
Architect	:	Wong Cho Tong
Engineer	:	Tin Yuen/Ho Sai Him
Start	:	1978
Finish	:	1986
Value	:	£64,100,000

The Royal Hospital, Ghubrah, Oman

Wimpey International are engaged on the design, construction and equipping of this 550 bed district hospital. It comprises a reinforced concrete frame in a two and three storey split level building. The project includes a postgraduate education centre, library, lecture theatre, exhibition area, sports facilities and staff housing. Gross floor area is 64,000 m².

Client	:	Oman Ministry of Health
Architect	:	Percy Thomas Partnership
Engineer	:	Donald Smith Seymour Rooley/ Wimpey Group Services Limited
Start	:	July 1983
Finish	:	January 1987
Value	:	£147,100,000

5. GENERAL COMPANY INFORMATION

General

Name of Firm : George Wimpey International Limited

Address : Head Office:
27 Hammersmith Grove, London W6 7EN

Overseas Offices:
Please refer to latest Annual Report and
Accounts of George Wimpey PLC

Telephone Number : 01-748 2000
International: + 44 1 748 2000

Telegrams and Cables : WIMPEYCO LONDON

Telex : UK - 25666

: Overseas - 22436

Number of Company : 959327

Date of Incorporation : 31st July 1969

Place of Incorporation : London, United Kingdom

Principals : Managing Director A D McDowall

Directors
K S Bowden
R B Ferris
L C T Sallabank
G A Wright
R J Astley
G E Payne
D A Ketteridge
D J Fisher
R J Beauprez

Secretary : P J Tyas

Financial

George Wimpey PLC : Group Turnover		<u>United Kingdom</u>	<u>Overseas</u>
	1980	£833,000,000	£383,000,000
	1981	£716,000,000	£385,000,000
	1982	£716,000,000	£524,000,000
	1983	£822,000,000	£658,000,000
	1984	£836,000,000	£682,000,000

Company Bank : National Westminster Bank PLC
22 Kings Mall
London W6 0QD

Bank Code 60-50-06

To whom reference may be made regarding the
Company's financial standing.

The above may also issue bonds and guarantees on
behalf of the Company.

Share Capital :		<u>Authorised</u>	<u>Issued</u>
	Ordinary Shares of £1 each	£45 million	£45 million

Insurance Brokers : Wimpey Insurance Services Limited

Amount of
Public Liability : £50 million

Auditors : Deloitte, Haskins & Sells
128 Queen Victoria Street
London EC4P 4JX

Manpower Resources

	<u>George Wimpey PLC (Group)</u>	<u>George Wimpey International Limited</u>
Staff	10,800	3,300
Labour Force	19,000	9,500

Plant and Equipment

The Group's holding of plant and equipment currently engaged on over 1000 contracts in more than 30 countries throughout the world is valued at around £90 million.